



SESYNC Feedbacks

News from the National Socio-Environmental Synthesis Center



UNBREAKABLE BONDS | Linking People and Nature

Close Out Earth Month with Resources That Focus on the Relationship Between Humans and the Environment

At SESYNC, we have always believed that all environmental problems are social problems by nature. As a result, we've built an extensive resource collection that illustrates the dynamic interactions between people and the natural world and how those interactions factor into some of our most pressing environmental issues.

As Earth Month draws to an end, celebrate Mother Earth by learning more about some common **social and environmental connections** in sustainability studies.

Introducing Socio-Environmental Problems to New Learners Lesson: They Are All Social and Wicked

This lesson first seeks to challenge learners to accept that all environmental problems are social in their origin and/or consequences—in fact, many problems are both environmental and social. It then introduces the concept of wicked problems with the goal of building understanding of the importance of individual perspectives and values in identifying, defining, and attempting to



solve socio-environmental problems. This lesson uses a case study and asks learners to consider who benefits from and who is hurt by human decisions and actions. [Learn more.](#)

Introduction to Socio-Environmental Systems Lesson: A Lens to Examine Sustainability with a Food Insecurity Exercise

This lesson introduces socio-environmental systems—often called socio-ecological systems—for learners who are new to the concept. After an initial discussion with slides, the lesson uses a systems thinking approach to challenge learners to draw and label the components and interactions of an socio-environmental system related to a problem with food insecurity. [Learn more.](#)



Sociological Approaches to the Environment Lesson

This lesson outlines a specific plan to introduce natural science students to hybrid epistemological approaches that explore socio-environmental challenges, in this case agricultural irrigation. After introducing the theories and methods of sociology, the lesson focuses on three areas inherent to environmental sociology: material, ideological, and solutions-based approaches. [Learn more.](#)



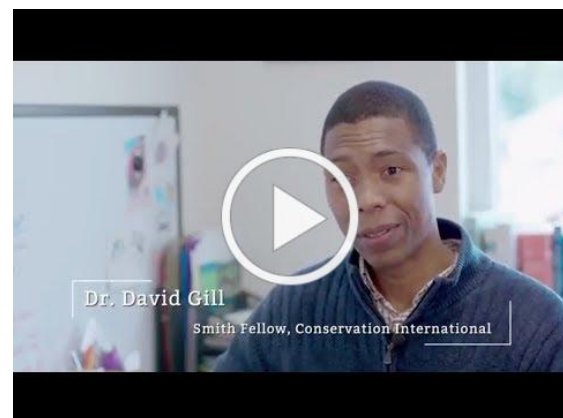
Collaborating Across Anthropological and Environmental Science Domains Lesson

This lesson challenges students to think about how anthropology and environmental science are synthesized to understand complex systems. It exposes students to a range of perspectives on the challenges and possibilities involved when working with methods, data, knowledge, and epistemological frameworks from these distinct disciplinary backgrounds. [Learn more.](#)



Understanding Environmental Problems through a Socio-Environmental Lens

This is the first of three short videos meant to explain how environmental sustainability problems are inherently social problems; how teams can study them; and what methods researchers use to study them. This video focuses on understanding environmental problems and sustainability through a socio-environmental lens. It provides multiple, specific examples of sustainability problems and how to conceptualize them within a socio-environmental framework. [Learn more.](#)



What Is a Socio-Environmental System?

This brief explainer article introduces the concept

of a socio-environmental (S-E) system, which refers to a group of humans, social elements, and processes that interact with each other and nature. It overviews the components of a system and gives examples of how to conceptualize them. [Learn more.](#)



Environmental Sociology on Campus Lesson: A Field Trip

This lesson aims to get natural science students involved in empathic and perspective-building interactions with the less privileged members of their campus community. It will also expand their sense of what counts as ecological work and how environmental justice can factor into equitable socio-environmental solutions. [Learn more.](#)



IN THE LITERATURE | Understanding S-E Systems

Looking for more? Check out some SESYNC-supported published articles focusing on the integration of social and environmental components into sustainability studies.

"Learning to integrate across the natural and social sciences." Published in *Journal of Environmental Studies and Sciences*. By Cynthia Wei, Michael L. Deaton, Teresa J. Shume, Ramiro Berardo, and William Burnside.

"A framework for conceptualizing and modeling social-ecological systems for conservation research."

Published in *Biological Conservation*. By John M. Anderies, Graeme S. Cumming, Hayley S. Clements, Steven J. Lade, Ralf Seppelt, Sivee Chawla, and Birgit Müller.

"Studying water quality using socio-environmental synthesis approach: A case study in Baltimore's watershed." Published in *Hydrology*. By Mintesinot Jiru, Janette North-Kabore, and Tatiana Roth.

"Teaching socio-environmental synthesis with the case studies approach." Published in *Journal of Environmental Studies and Sciences*. By Cynthia Wei, William Burnside, and Judy Che-Castaldo.

"Challenges and opportunities of social media data for socio-environmental systems research." Published in *Land*. By Bianca Lopez, Nicholas R. Magliocca, and Andrew T. Crooks.

"A framework for teaching socio-environmental problem-solving." Published in *Journal of Environmental Studies and Sciences*. By Cynthia Wei, Michael L. Deaton, Teresa J. Shume, Ramiro Berardo, and William Burnside.

"Frontiers in socio-environmental research: components, connections, scale, and context." Published in *Ecology & Society*. By Simone Pulver, Nicola Ulibarri, Kathryn L. Sobocinski, Steven Alexander, Michelle L. Johnson, Paul F. McCord, and Jampel Dell'Angelo.

NEW PUBLICATIONS | SESYNC in the Journals

"State-reinforced co-provision of community-governed greenspace in racially marginalized neighborhoods: lessons from Chicago's innovative NeighborSpace

Land Trust and Partnership." Published in *Ecology & Society* by Daniel A. DeCaro, Emmanuel Frimpong Boamah, Mary A. Rudolph, and Gifty Amma Adusei. This paper resulted from the Pursuit, [Government-Supported Adaptation \(GSA\) Project](#).

"Maladaptive state reinforcement of greenspace in racially marginalized neighborhoods: lessons from Louisville, Kentucky's failed cooperative extension partnership." Published in *Ecology & Society* by Daniel A. DeCaro, Emmanuel Frimpong Boamah, Mary A. Rudolph, and Gifty Amma Adusei. This paper resulted from the Pursuit, [Government-Supported Adaptation \(GSA\) Project](#).

CONTACT US | We Want To Hear From You!

We'd like to hear from you! Do you have updates or outcomes tied to your SESYNC research that would make for an interesting research spotlight? Are you looking for a resource on a topic that we haven't covered yet? Do you want to share an idea? Contact us at communications@sesync.org.

www.sesync.org



SESYNC | 1 Park Place Suite 300 | Annapolis, MD 21401 US

[Unsubscribe](#) | [Update Profile](#) | [Constant Contact Data Notice](#)



Try email marketing for free today!