



SESYNC Feedbacks

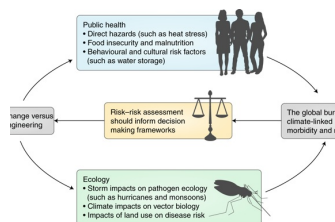
News from the National Socio-Environmental Synthesis Center

Job Opportunity

Science Communications Coordinator:

SESYNC is seeking a full-time, experienced science communications professional to lead communications activities.

[Details here](#). Apply by **Nov 5, 2018**.



Now Is the Time to Answer Questions about Climate Engineering Disease Impacts

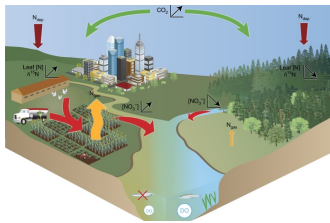
ESA Decision Making

One of the balancing acts faced by conservation agencies is how to conserve

Social Science Extreme Events Research

Lori Peek, SESYNC Immersion Scholar and

A commentary in the October 2018 issue of the journal *Nature Climate Change* calls for caution because geoengineering still lacks a "clean bill of health." [Read press release.](#)



Availability of nitrogen to plants is declining as planet warms

Article in *Nature Ecology and Evolution* found that global changes are causing a decrease in the availability of a key nutrient for terrestrial plants. [Read press release.](#)

and protect as many species as possible from extinction with limited funding and finite resources. A policy forum in *Science* introduces a new tool to help. [Read press release.](#)



People dump their exotic animals for logical, if not good, reasons

Coverage of finding from *SESYNC Pursuit* on pet trade and the release and establishment of exotic animals. [Read article in Scientific America.](#)

Symposium Theme Lead, invites hazards and disaster social scientists to join The SSEER network. [Read the call for participants.](#)



New Water Resources Planning Framework

Climate Risk Informed Analysis (CRIDA) is a new methodology for water decision makers interested in incorporating resilience into planning and operational decisions. [Read press release.](#)

SESYNC Funds Six New Pursuits and Workshops

Advancing interdisciplinary research on social-ecological networks to understand ecosystem services across scales

PIs:
Laura Dee, University of Minnesota
Angela Guerrero, The University of Queensland

Socio-environmental systems indicators for climate change adaptation & resilience in the US

PIs:
Keely Maxwell, U.S. Environmental Protection Agency
Jesse Keenan, Harvard University

Food-Energy-Water Interdependencies of the Global Agrarian Transition

PIs:
Jampel Dell'Angelo, VU University Amsterdam
Paolo D'Odorico, University of California Berkeley

New Scenarios and Models for Climate Engineering

PIs:
Simon Nicholson, American University
Christopher Trisos, SESYNC

Legal Design Principles of Government-Supported Adaptation: Designing Effective Decentralization Programs in River Basins and City Greenspaces

PIs:
Daniel A. DeCaro, University of Louisville
Edella Schlager, The University of Arizona, Tucson

The death and life of biodiversity: modeling extinction and resilience on islands

PIs:
Siobhán B. Cooke, Johns Hopkins University
Liliana M. Dávalos, Stony Brook University

SESYNC Publications

Climate engineering needs a clean bill of health. Published in *Nature Climate*

[Change](#) by SESYNC postdoc Colin Carlson and former postdoc Christopher Trisos .

Endangered species recovery: A resource allocation problem. Policy Forum in [Science](#) by Leah Gerber and colleagues as part of the Pursuit, [ESA Decision Making](#).

Long-term and regional perspectives on recent change in lacustrine diatom communities in the tropical Andes. Published in the [Journal of Paleolimnology](#) by Sherilyn Fritz, SESYNC Postdoc Xavier Benito, and Miriam Steinitz-Kannan.

Racial disparities in pollution exposure and employment at US industrial facilities . Published in [PNAS](#) by Michael Ash and James Boyce as part of the Pursuit, [Computational Environmental Justice Analysis](#).

Gauging support for macroecological patterns in helminth parasites . Published in [Global Ecology and Biogeography](#) by Tad Dallas and colleagues including SESYNC postdoc Colin Carlson.

The neglected costs of water peace. Published in [WIREs Water](#) by SESYNC researchers Jampel Dell'Angelo, Paolo D'Odorico, and Maria Cristina Rulli.

Modelling the critical transition from Chilean evergreen forest to savanna: Early warning signals and livestock management. Published in [Ecological Modelling](#) by former SESYNC Postdoc Andres Baeza.

Global state and potential scope of investments in watershed services for large cities. Published in [Nature Communications](#) by Chelsie Romulo and colleagues as part of the Graduate Pursuit, [Enabling Payments for Watershed Services](#).

Climate Risk Informed Decision Analysis (CRIDA): Collaborative Water Resources Planning for an Uncertain Future. A report published by [UNESCO](#) and incorporating work by the Pursuit, [Climate Change & Water Resources Adaptation: Decision Scaling & Integrated Eco-engineering Resilience](#).

GET MORE SESYNC

Stay Connected



1 Park Place, Suite 300, Annapolis, MD 21401
410.919.4810