



## SESYNC Feedbacks

News from the National Socio-Environmental Synthesis Center



### CLIMATE CHANGE | Behaviors, Policies, & Approaches

#### It's Hot. SESYNC Has Cool Resources.

Over the last few weeks, weather-related topics have filled the news. Here at SESYNC, it's been HOT with near-record-breaking temperatures. Elsewhere, drought, hurricanes, tornadoes, warming coastal waters, flooding, and more, are affecting communities widely.

Climate change is here, and we're already feeling its impacts. But, not all hope is lost—yet.

Check out the below SESYNC resources that aim to get learners thinking about ways to change our behaviors; the meaning of resilience (hazard, exposure, vulnerability); and innovative approaches for investigating climate change solutions. Check out all of SESYNC's climate change-related [content here](#).

#### Climate Change and Choices Lesson: Change Behavior, Mitigate, or Adapt?

This lesson briefly reviews introductory concepts around climate change, including how emissions cause warming, which gases are involved and how they are produced, and what international policy is doing with respect to the Paris Agreement. [Read more.](#)



#### What Influences Pro-Environmental Behavior Lesson: Learning from



## Psychological Research

This short lesson draws from psychological research by scholar Linda Steg of the University of Groningen. It challenges learners to consider how individual and collective values influence pro-environmental behavior, as well as when and why people act upon those values. [Read more.](#)

---

## Audio Interview: Climate Modeling

In this audio interview, SESYNC's Erin Duffy talks with Drs. Brian Beckage and Katie Lacasse, on their innovative work of integrating human behavior into climate change models. [Learn more.](#)



---

## Video: Water & Governance

This short video takes a look at how the SESYNC Resilience & Governance team worked to better understand the implications of water management decisions and to develop a set of tools to help society navigate a more sustainable future. [Watch here.](#)

---

## Explainer: Sustainability, Resilience, and the Dimensions of Risk: Hazard, Exposure, Vulnerability

This brief explainer deconstructs the term "resilience" to help learners understand its conceptual application, as well as its use as an analytical tool. It focuses on the use of the term resilience for three groups: ecologists, social scientists, and those studying socio-environmental systems and their problems. [Read more.](#)



---

## Survive the Century Lesson: Climate Change Decisions for Your Grandchild

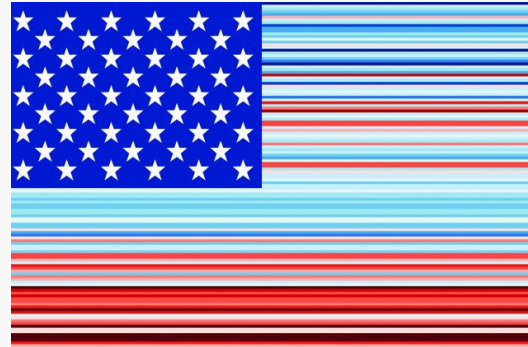
This scenario-based creative lesson, uses the game [Survive the Century](#) to challenge students to design their grandchild's hometown in the year 2100, while limiting global warming to the 1.5–2° Celsius (C) range (the ambitious lower end of what

we can achieve). [Read more.](#)



## Critical Discourse Analysis Lesson: Visualizing Climate Change Data

This lesson has learners investigate the power of climate change (CC) visualizations by reviewing several distinct techniques for CC visualization for their factual, rhetorical, emotional, and aesthetic powers. Participants learn to appraise each visual's success in capturing public awareness and concern about CC. [Read more.](#)



## CLASSROOM RESOURCES | Active Learning Materials

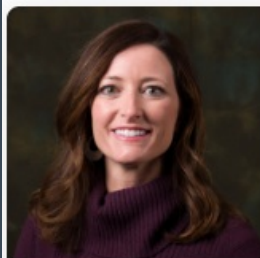
If you're still looking for some creative and innovative ways to engage with students next semester, don't forget to browse through [SESYNC's resources](#). Our free learning and teaching resources are perfect for undergraduates, graduate students, and beyond. Looking to bolster their [interdisciplinary collaboration skills](#)? Want to understand [how to examine sustainability issues through a socio-environmental lens](#)? We've got you covered.

Learn what our different resource categories mean [here](#).

## TALKING DISTURBANCE | Get A Sneak Peek of a Chat with Peek

### Be on the Lookout for Our Next SESYNC Audio Interview on Environmental Sociology with Dr. Lori Peek

Listen below for a sneak peek of SESYNC's Erin Duffy's conversation with [Dr. Lori Peek](#), Professor of Sociology and Director of the Natural Hazards Center at the University of Colorado Boulder. They'll discuss what sociology is and how it can help us understand, prepare for, and mitigate harm from natural hazard events. Be on the lookout for the full interview—coming soon!



### Trailer: Environmental Sociology

Succinct Science—Audio Interviews from SESYNC • Jul 27, 2023



00:00

 Share

01:30

## NEW PUBLICATIONS | SESYNC in the Journals

"Exploring the potential of theory-based evaluation to strengthen marine spatial planning practice." Published in [Ocean & Coastal Management](#) by former SESYNC postdoc

Rachel Zuercher, former SESYNC staff member Nicole Motzer, Natalie C. Ban, Wesley Flannery, Anne D. Guerry, Rafael A. Magris, Shauna L. Mahajan, Ana K. Spalding, Vanessa Stelzenmüller, and former SESYNC staff member Jonathan G. Kramer.

**"Data & the Seed: From Extractive Epistemology to Emancipating Agrobiodiversity Research Methods."** Published in *Droit et cultures* by Veronica Limeberry and Garrett Graddy-Lovelace. This paper resulted from the SESYNC Pursuit [Agrobiodiversity, Food Security, and Nutrition](#).

**"Slower population growth in hot and dry conditions."** Published in *Communications Earth & Environment* by Martina Grecequet. This article highlights the research of former SESYNC postdoc Maia Call and her work on [Climate, Migration, and Gender](#).

**"Closing the gap between science and management of cold-water refuges in rivers and streams."** Published in *Global Change Biology* by Francine H. Mejia, Valerie Ouellet, and Martin A. Briggs et al. This paper resulted from the SESYNC Workshop [Cold-Water Refuges](#).

**"Navigating or adding to complexity? Exploring the role of catchment partnerships in collaborative governance."** Published in *Sustainability Science* by Kerry A. Waylen, Kirsty L. Blackstock, Keith Marshall and Alba Juarez-Bourke. This paper was inspired by the SESYNC Foundation [Limits to Environmental Governance](#).

**"Coupled human-natural system impacts of a winter weather whiplash event."** Published in *Ecology and Society* by Irena F. Creed, Christopher M. Hewitt, Nora J. Casson, Alexandra R. Contosta, John L. Campbell, David Lutz, and Anita T. Morzillo. This paper resulted from the Pursuit, [Winter Weather Whiplash](#).

---

[www.sesync.org](http://www.sesync.org)

